

# FY 2016 Accomplishments



## WorkdayHR

On Feb. 14, 2016 the WorkdayHR system launched for system office, revenue cycle services (RCS) and St. Mary employees. WorkdayHR allows employees to have direct access to their information and easily make changes to personal details. To launch the new system, the project team worked around the clock to transfer data from MyHR, and conduct tests to ensure everything was working properly. St. Mary served as the beta site for Workday.

## Best Place to Work

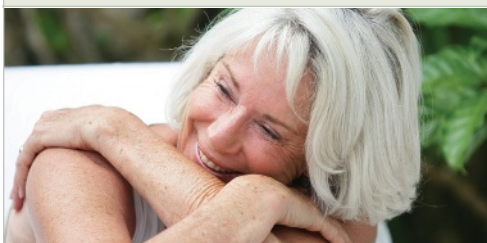
St. Joseph Health, St. Mary was named the best place to work two years in a row. 2015 was the first year St. Joseph Health, St. Mary was named the best place to work by Daily Press readers, and the ministry repeated in 2016.

## Best of the Desert

St. Joseph Health, St. Mary has been named the best hospital in the High Desert by Daily Press readers for nine years running. It is the longest running hospital in the desert, and the hospital of choice for High Desert residents.

## Joint Commission

St. Joseph Health, St. Mary has been granted full accreditation by The Joint Commission. An independent, not-for-profit organization, The Joint Commission accredits and certifies more than 20,500 health care organizations and programs in the United States. In March, the Commission conducted an unannounced three-day survey of St. Mary staff, practices and policies. St. Mary was previously accredited by Healthcare Facilities Accreditation Program (HFAP).



## Women's Choice Award

St. Joseph Health, St. Mary was selected as a top Women's Choice hospital for 2016. Those who carry the Women's Choice Award seal are demonstrating that they understand the importance of delivering a level of patient satisfaction that you can count on when choosing a hospital. The Women's Choice Award seal gives you comfort and confidence in your decision to choose St. Mary for your health care needs.

STAFF PROVIDED  
**42,167**  
CLINICAL ENCOUNTERS



**2,126**

ENCOUNTERS WITH PERSONS WITH DIABETES 15% INCREASE OVER LAST YEAR



**2,229**

ENCOUNTERS WITH PERSONS SUFFERING FROM DEPRESSION, PTSD AND SUBSTANCE ABUSE



**5,289**

ENCOUNTERS NUTRITION, OBESITY AND PHYSICAL ACTIVITY/ZUMBA

**6,612**

UNINSURED/IN NEED PATIENTS WERE PROVIDED WITH FINANCIAL AID/ CHARITY CARE AT A COST OF \$2,165,374

## St. Mary Care TV

SONIFI Health, the leading provider of interactive systems for hospital patients and hotel guests has partnered with St. Mary to deliver Interactive Television Services to its patients and their guests. The SONIFI Interactive System, dubbed St. Mary Care TV, will be installed in all patient rooms throughout St. Mary to help educate, engage and empower patients.

## Laborist Program

St. Mary implemented a successful laborist program in FY16 allowing for safer care in the OB unit by assuring 24/7 obstetrics coverage for High Desert mothers. The new program also accommodates an OB emergency department separate from the medical center's existing emergency department. This new department will be the only designated OB emergency service in the region. Increased quality and better outcomes as well as increased service levels are the goals of the new service.



## NICU Partnership

St. Mary's NICU has partnered with CHOC Children's for neonatology services. CHOC ranked among the nation's best children's hospitals by US News & World Report in 2015 and was the first children's hospital in the US to earn the Beacon Award for Critical Care Excellence.



## California Children's Services Designation

St. Joseph Health, St. Mary Neonatal Intensive Care Unit (NICU) has been pursuing a California Children's Services (CCS) designation for years to allow local mothers an option when critical acute care is needed for their infants, that doesn't require leaving the region. St. Mary was recently granted the designation; making it the only Hospital in the High Desert region that has earned the honor of taking care of some of the Victor Valley's most important patients.

## Tele Expansion

Based on demand and patient type, St. Mary successfully converted 20 med surg beds to accommodate telemetry (monitored) patients.

## Clinical Decision Beds

In an effort to increase capacity through efficiency while raising patient satisfaction, St. Mary, with the cooperation and partnership of physicians and hospitalists, designated eight specific beds for rapid decisions and throughput. This has resulted in decreased length of stay, higher satisfaction and increased capacity.

## Foundation Record Year

The foundation team at St. Mary exceeded their \$2 million philanthropic goal by raising over \$2.3 million. The team understands that successful fundraising isn't just about raising money, it is about relationships. Thus, a special emphasis was placed on increasing donor retention by placing intentional focus on building partnerships with donors, in support of our mission. Through these partnerships, the Foundation was able to fund a nursing endowment, increase membership in giving societies by 21.5%, and finalize a million dollar estate gift.

# 2016

## BY THE NUMBERS

Here are a few of St. Mary's numbers you might want to know:

### INPATIENTS

# 15,064

### SURGERIES

# 9,296

Inpatient surgeries: 3,919  
Outpatient surgeries: 5,377

### TOTAL EMERGENCY DEPARTMENT VISITS

# 81,075

### EMERGENCY DEPARTMENT ADMITS

# 12,041

### BABIES DELIVERED

# 2,195

### VOLUNTEER HOURS

# 39,000

